

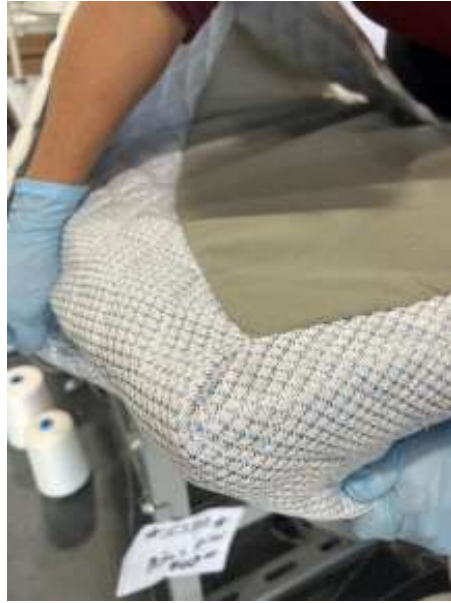
VIEW VIDEO



UM-55

Continental Miter Machine

United's UM-55 is a continental mitering machine for foundations with trimming corners and variable top feed assembly.



| SPECIFICATIONS | UM-55 |
|------------------------------------|--------------------------------------|
| Stitch type | chainstitch |
| Max sewing speed (rpm) | 5000 |
| Max recommended sewing speed (rpm) | 4500 |
| Needle height | 1/2" (12.7mm) |
| Auxiliary feeding | top feed mechanism |
| Motor | direct drive |
| Presser foot height | 1/2" (12.7mm) |
| Voltage | 220 (alternative voltages available) |
| Current (amps) | 5 |
| Air pressure (psi) | 80 |

The UM-55 sews non-woven to quilted border, trims and corner forming a miter while controlling material feeding with VTF – variable top feed.

- Reduces labor
- Miter corner is cut with UM-55
- Production: 160 pc/8 hours
- Speed: 5000 rpm
- Chainstitch
- Direct Drive motor
- Variable top feed mechanism
- Electronic foot lift and needle positioning

Sourcing Unlimited's two companies, United Mattress Machinery and Jumpsource, are industry leaders in producing the highest quality of machinery and aftermarket parts.

978-969-1872 | UNITEDMATTRESSMACHINERY.COM



430 S Congress Ave., Suite 1D
Delray Beach, FL 33445
USA